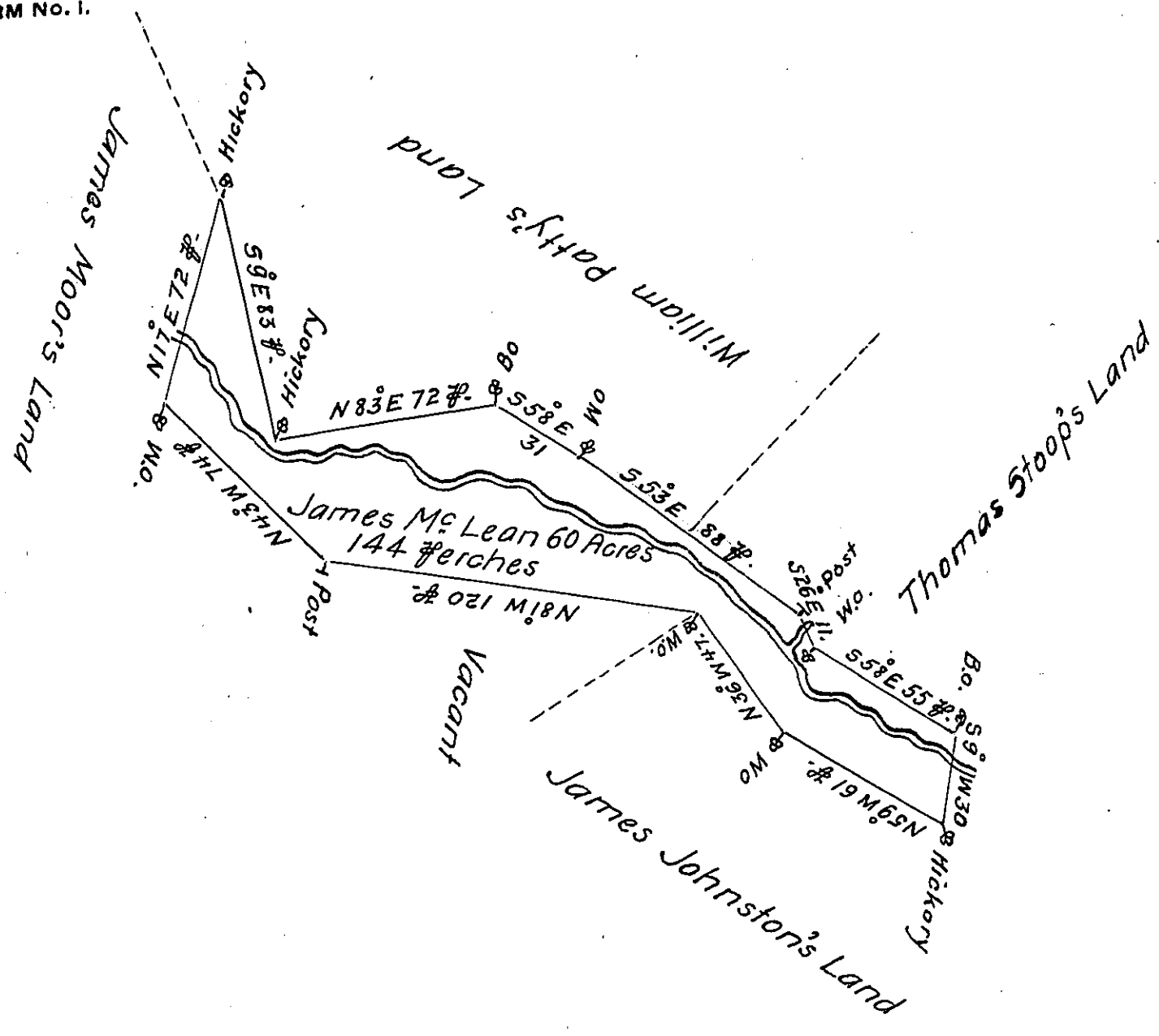


FORM No. 1.



A Draught of a Tract of Land Situate in Antrim Township in the County of Cumberland containing Sixty Acres, One hundred forty four perches and the Usual Allowance of Six per Cent for Roads. Resurveyed for James McLean ^{May 15th 1765} in consequence of an Order from the Surveyor General and by Virtue of the Honorable the Proprietaries Warrt. bearing Date the 9th of February 1754. ~

To John Lukens Esq: }
 Surveyor General } John Armstrong D.S.

IN TESTIMONY that the above is a copy of the original remaining on file in the Department of Internal Affairs of Pennsylvania, made conformably to an Act of Assembly approved the 16th day of February, 1833, I have hereunto set my Hand and caused the Seal of said Department to be affixed at Harrisburg, this sixth day of February 1906

Luca N. Perry
 Secretary of Internal Affairs.